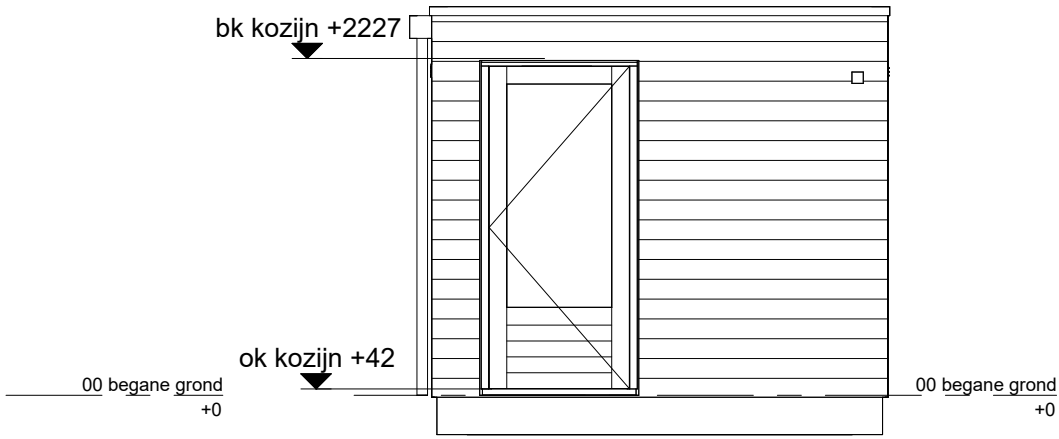
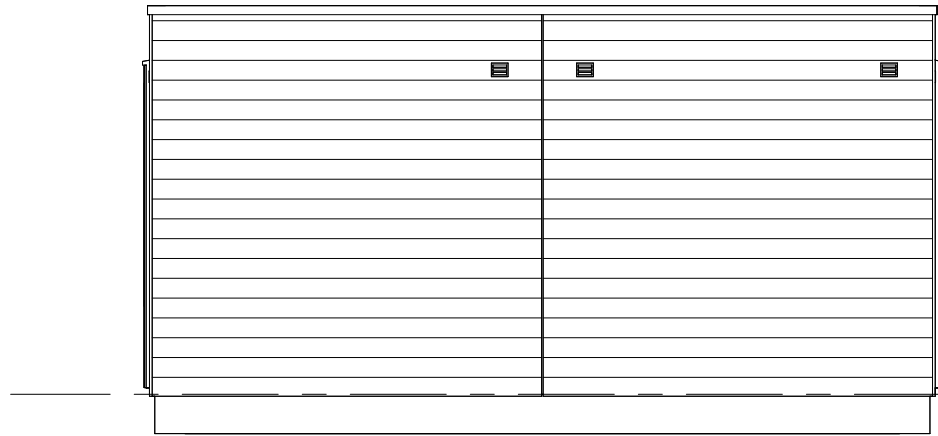


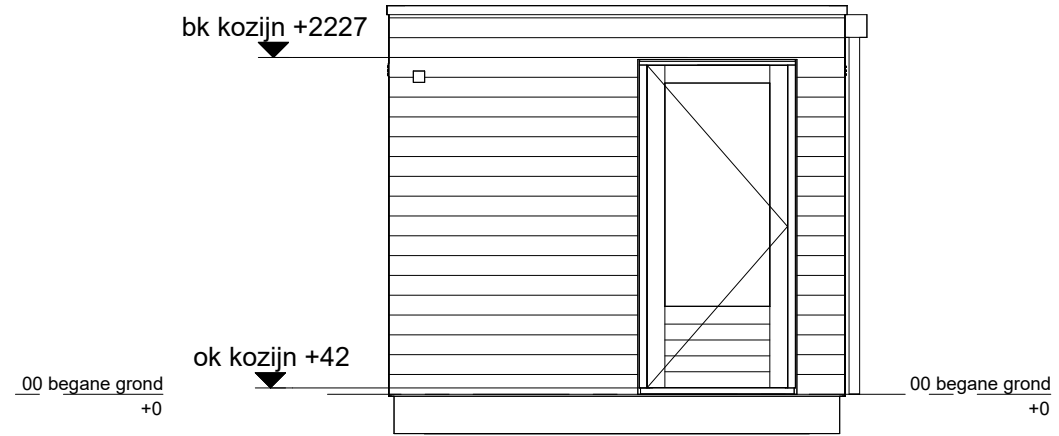
voorzijde



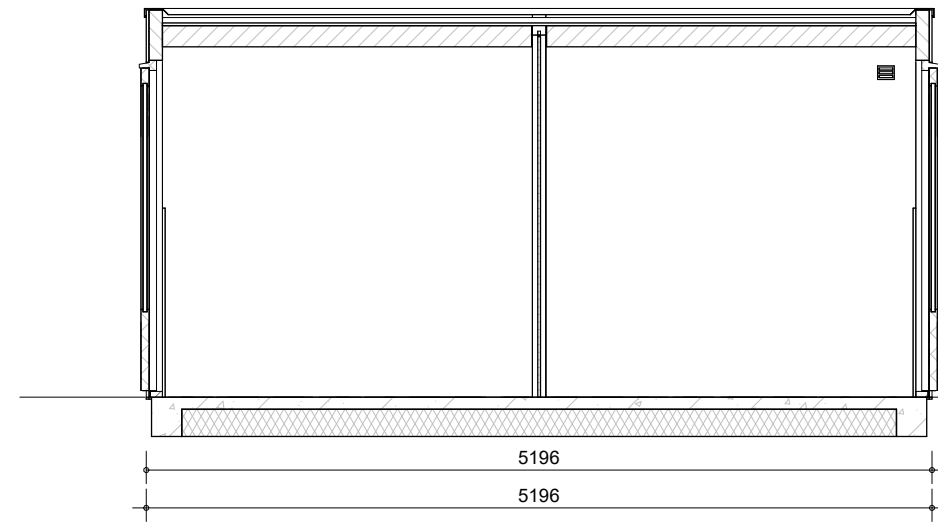
zijaanzicht rechts



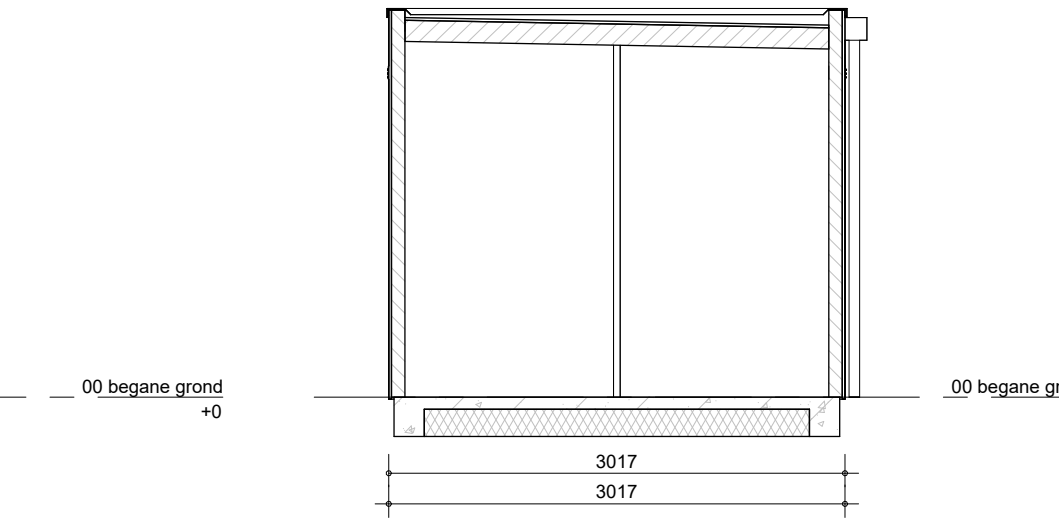
achterzijde



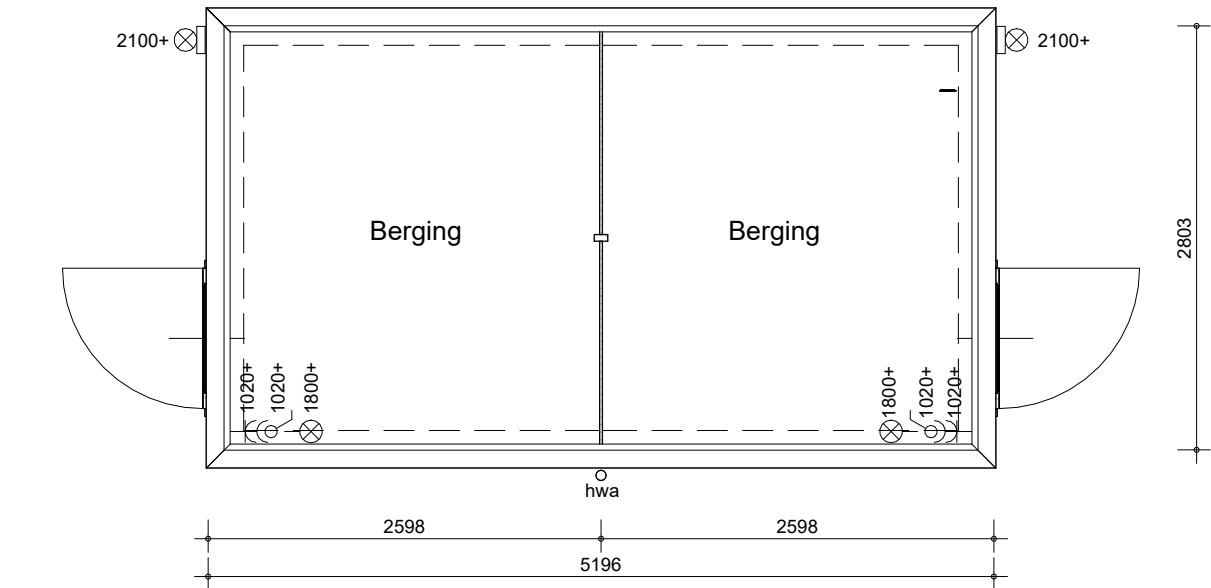
zijaanzicht links



doorsnede



doorsnede dwars



plattegrond

bouwnummers: 303, 304, 305, 306, 308, 309, 310, 311, 312, 313, 314, 315, 316, 317, 318, 319, 320, 321, 324, 325, 326, 327, 328, 329, 330, 331, 332, 333, 334, 335, 336, 337, 338, 339, 340, 342, 343, 344, 345, 347, 348, 349, 350, 351, 352, 353, 354



BAM Advies & Engineering
Regulierenring 6
3981 LB Bunnik
Postbus 20
3980 CA Bunnik

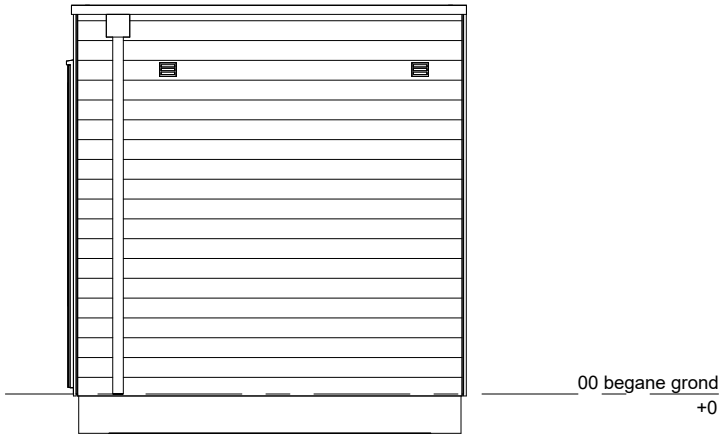
project
63 GGK. won. Muggenburg Zuid fase 3

omschrijving
Dubbele berging

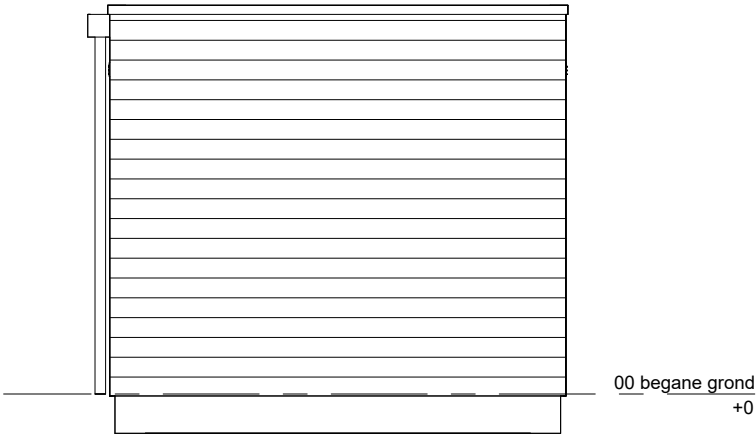
getekend
LMk
status
definitief

schaal
1:50
datum
13-05-2026
wijz. datum

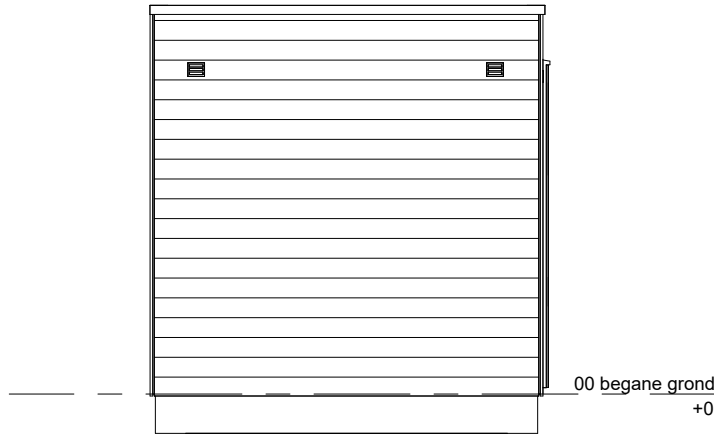
project nr
WN50103
tekening nr
V-DB-000



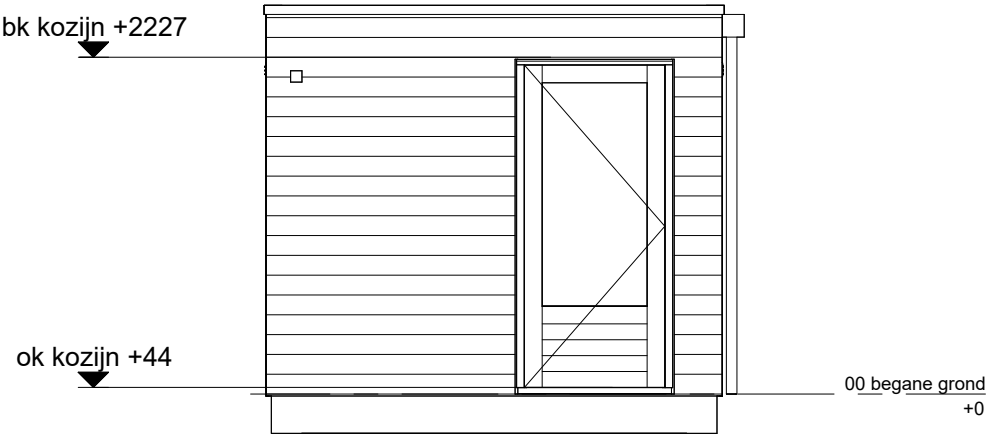
voorzijde



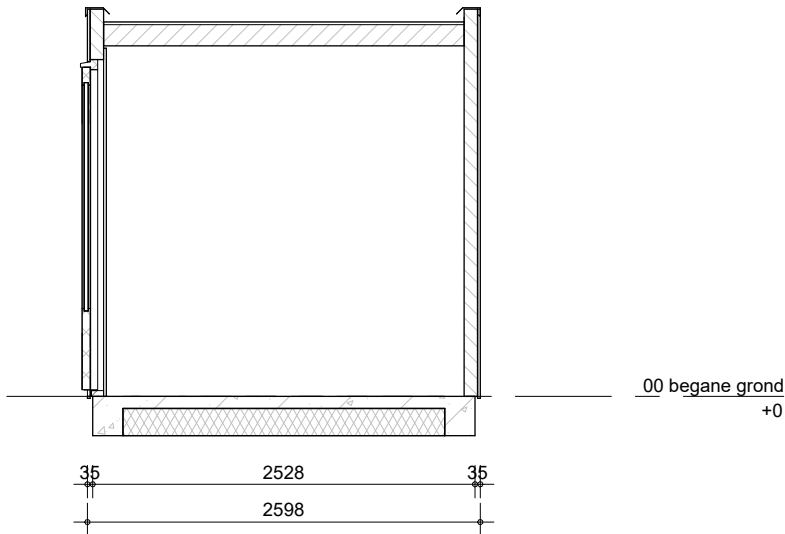
zijaanzicht rechts



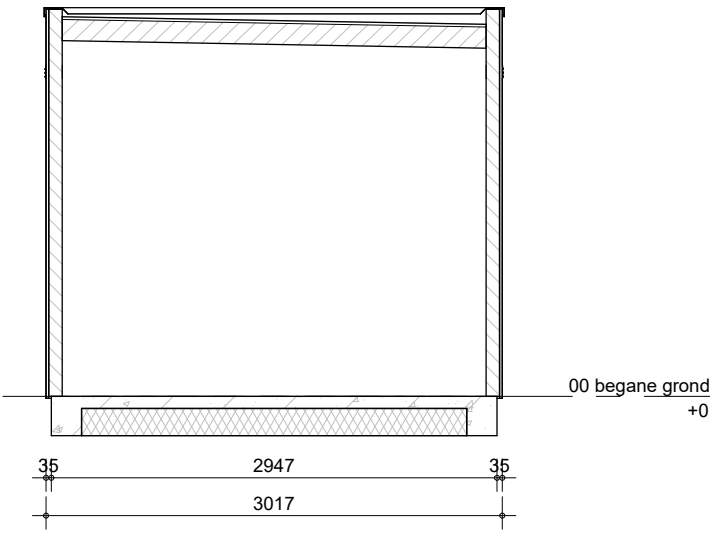
achterzijde



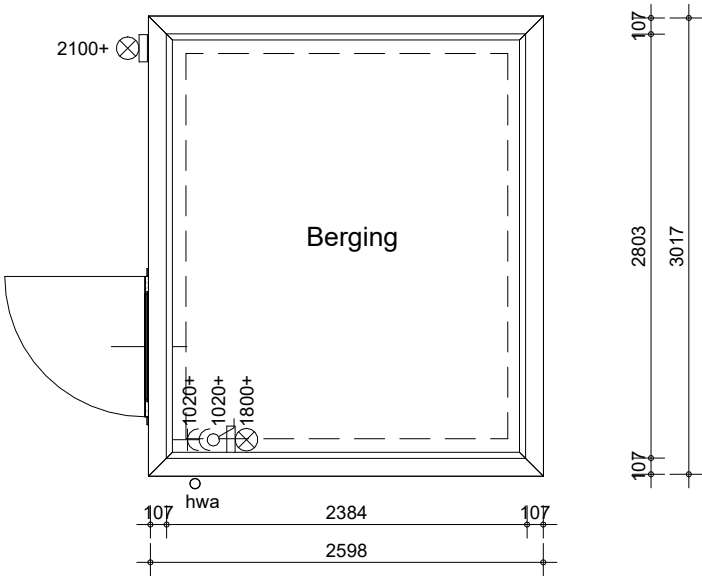
zijaanzicht links



doorsnede



doorsnede dwars

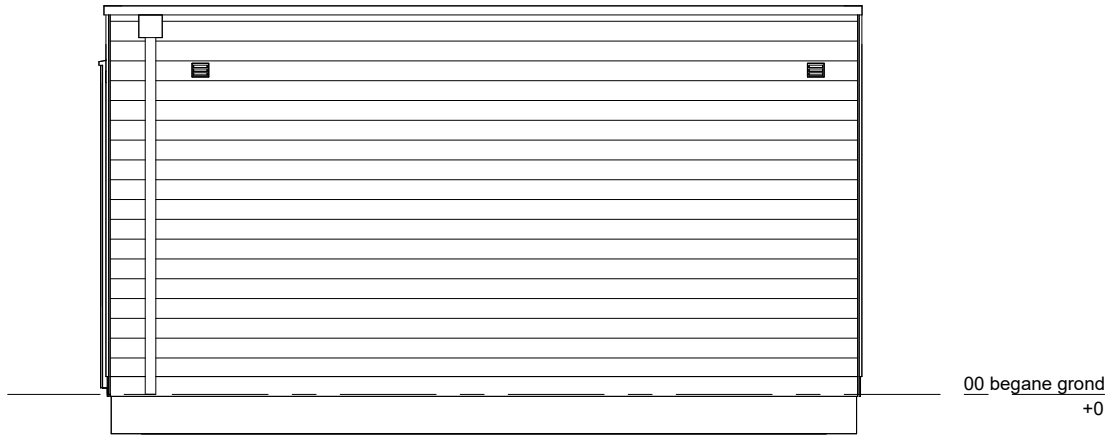


plattegrond

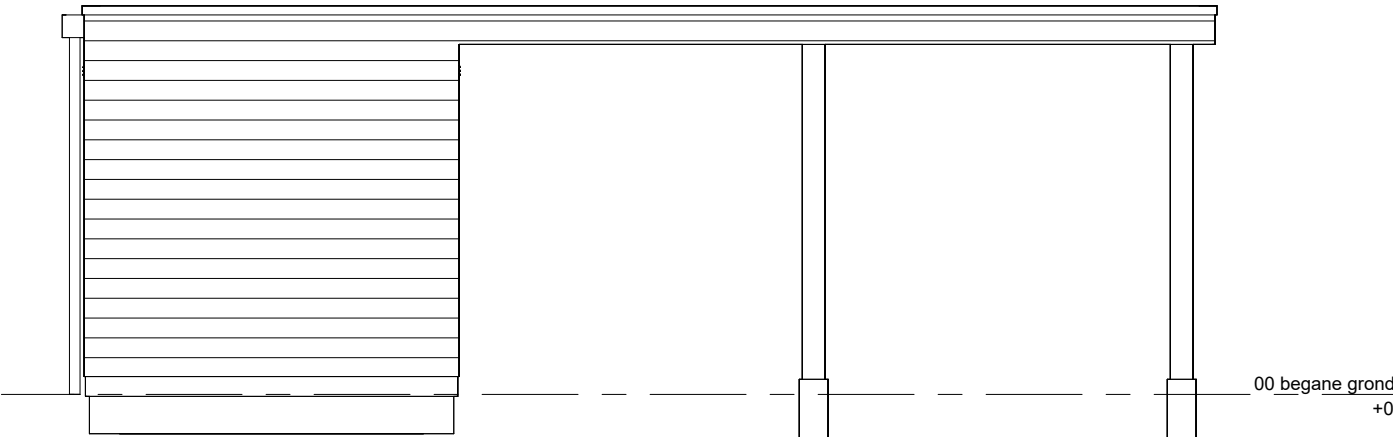
bouwnummers: 307, 322, 323, 341, 346, 355


BAM Advies & Engineering
Regulierenring 6
3981 LB Bunnik
Postbus 20
3980 CA Bunnik

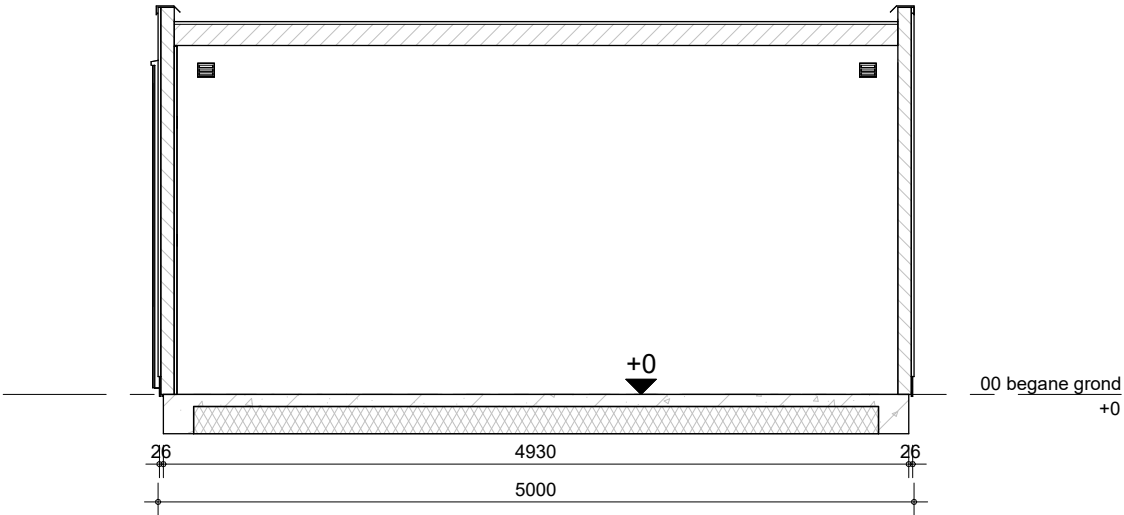
project	63 GGK. won. Muggenburg Zuid fase 3	getekend LMk	status definitief	schaal 1:50	datum 13-05-2026
omschrijving	Enkele berging	project nr	WN50103	wijz. datum	
		tekening nr	V-EB-000		



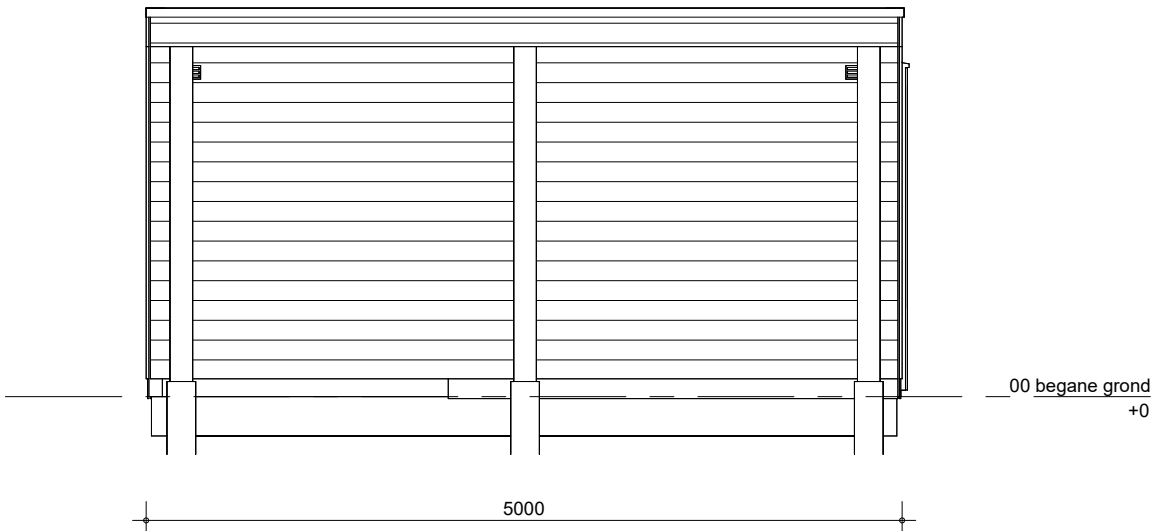
voorzijde



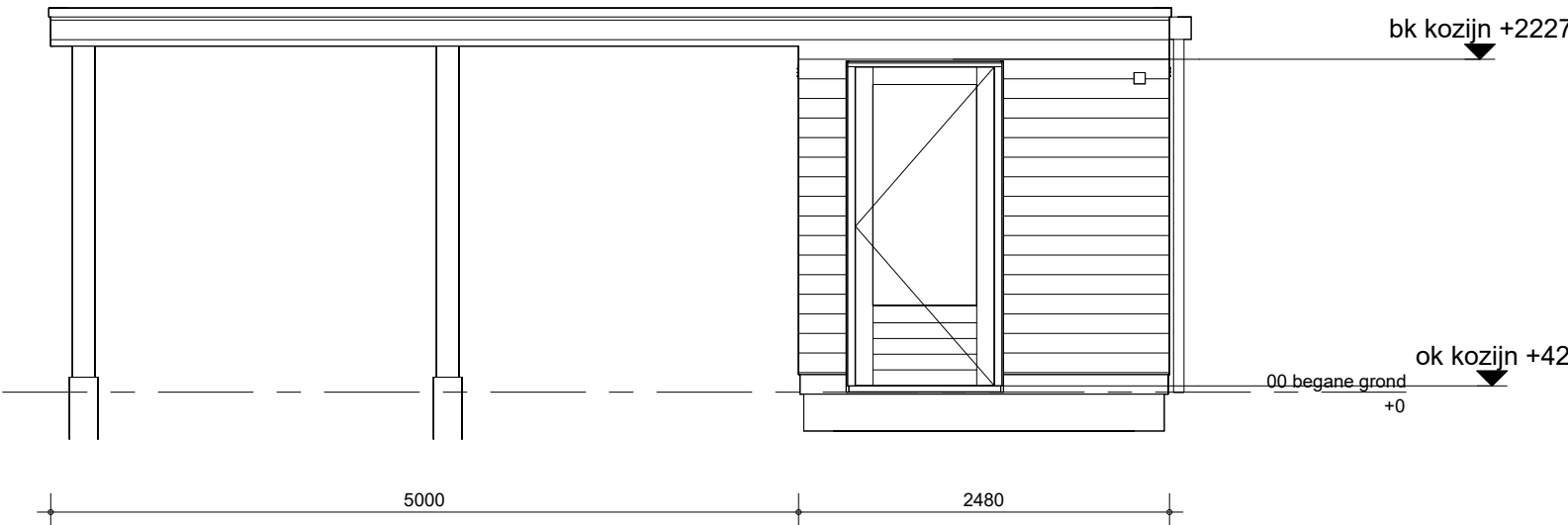
zijaanzicht rechts



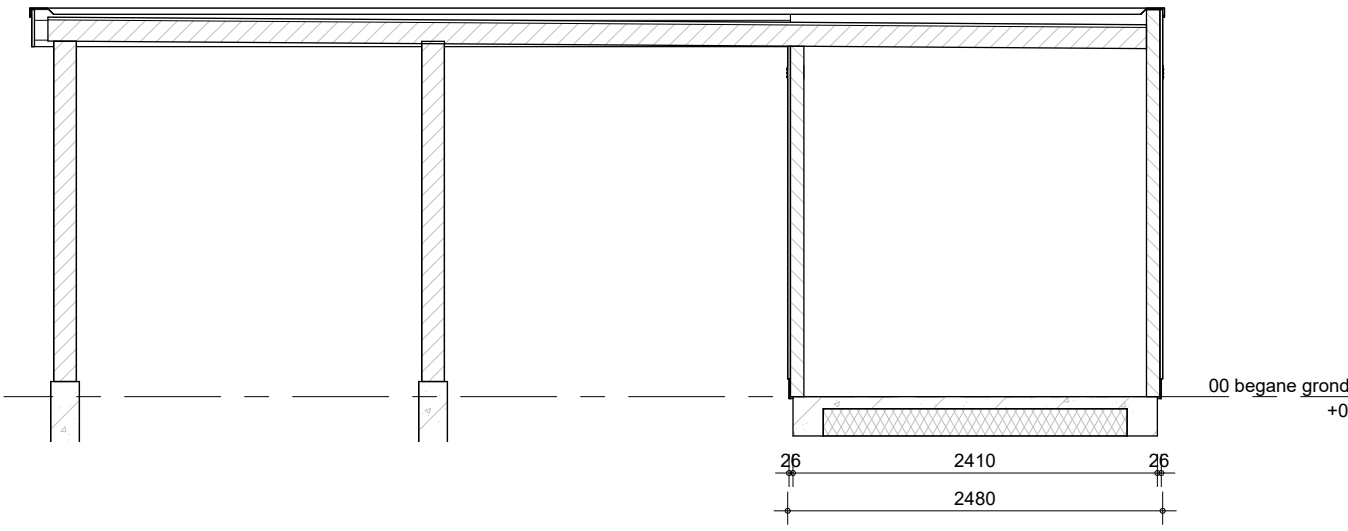
doorsnede



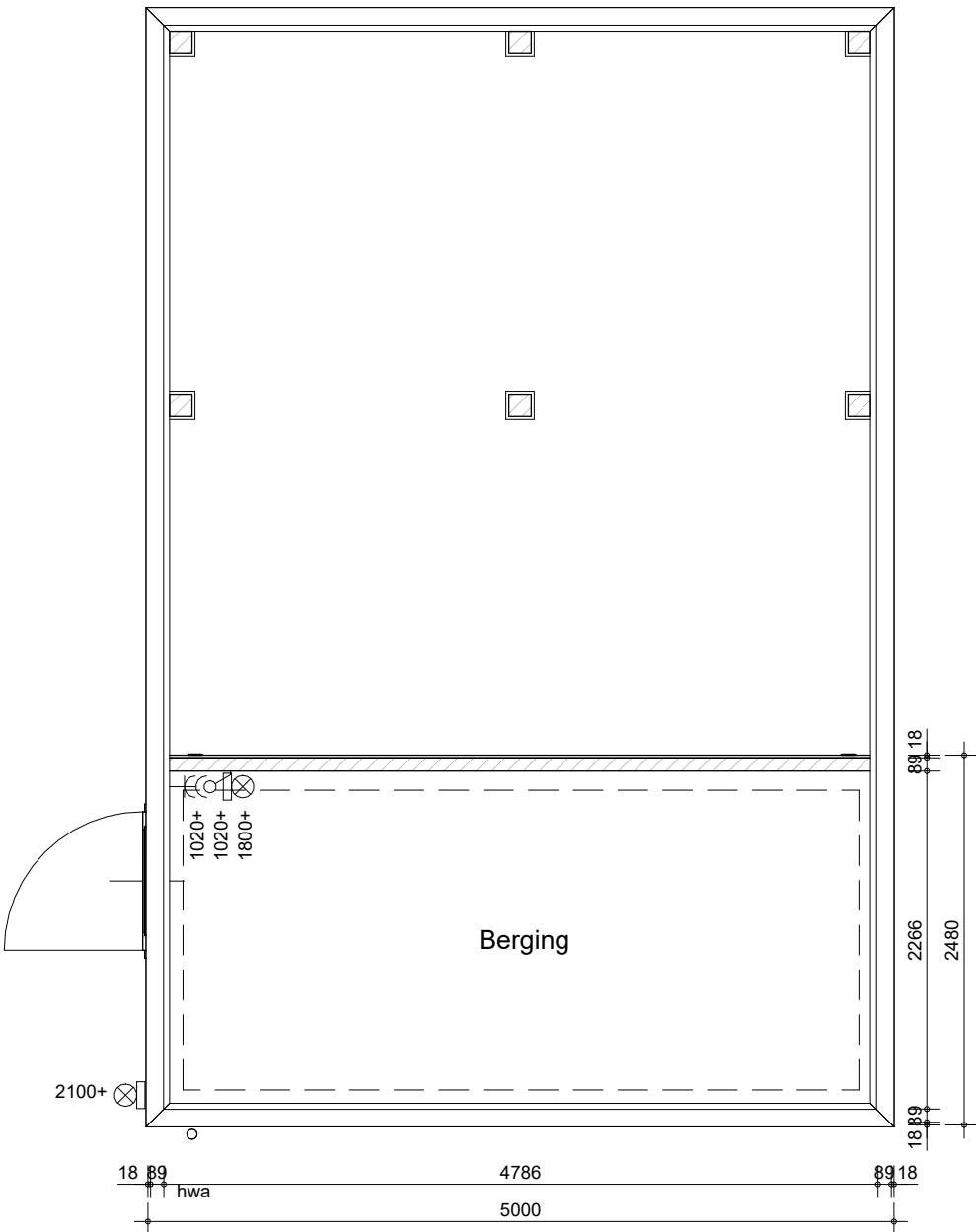
achterzijde



zijaanzicht links




doorsnede dwars



plattegrond

bouwnummer: 356

Kolomposities zijn indicatief en kunnen nog wijzigen

 BAM Advies & Engineering Regulerenring 6 3981 LB Bunnik Postbus 20 3980 CA Bunnik	project	63 GGK. won. Muggenburg Zuid fase 3	getekend LMk	schaal 1:50
	omschrijving	Enkele berging met carport	status definitief	datum 13-05-2026
	tekening nr	V-EB-001	project nr WN50103	wijz. datum